

AXIS 210A/211A Network Cameras

Superior video quality for professional indoor and outdoor applications

AXIS 210A and AXIS 211A, professional network cameras from the market leader in network video, are ideal for surveillance and remote monitoring. Supported by the industry's largest base of software applications, they provide the perfect solution for securing offices, shops, schools and other facilities over the local area network or across the Internet. The cameras, with their integrated audio support, enable remote users to not only view, but also listen in on an area and communicate orders or requests to visitors or intruders via two-way audio communication.

The support for Power over Ethernet, enabling power to the cameras to be delivered via the network, reduces cabling requirements and installation costs, and consolidates power for higher reliability. Connecting directly to IP networks, the built-in Web server, open application interface and sophisticated networking functions based on open industry standards greatly simplify systems integration.

The cameras provide superior image quality, giving full frame rate even at VGA resolution, thanks to the progressive scan CCD sensor and powerful real-time image processing hardware.



- Superior image quality using progressive scan CCD and advanced video processing
- Up to 30 frames per second in VGA 640 x 480 resolution
- Simultaneous Motion JPEG and MPEG-4 streams optimize for quality and bandwidth
- Built-in motion detection with pre- and post-alarm image buffering
- Power over Ethernet support (IEEE 802.3af) simplifies installation
- Integrated two-way audio

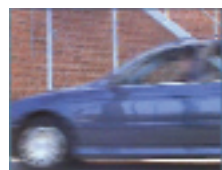


AXIS 210A/211A Network Cameras



Specifications

| | | | |
|---|--|---|---|
| Models | AXIS 210A: indoor use only AXIS 211A: varifocal DC-Iris, indoor/outdoor | Processors, memory and clock | CPU: ETRAX 100LX 32bit Video processing and compression: ARTPEC-2 RAM: 32 MB, Flash: 8 MB Battery backed up real-time clock |
| Image Sensor | 1/4" Sony Wfine progressive scan RGB CCD | Power | 7-20 V DC max 7 W, PoE IEEE802.3af Class 2 |
| Lens | AXIS 210A: 4.0 mm, F1.2, fixed iris, CS mount AXIS 211A: 3.0 - 8.0 mm, F1.0, DC-iris, CS mount | Operating conditions | 5 - 45 °C (41 - 113 °F), humidity 20 - 80% RH |
| Angle of view | AXIS 210A: 48° horizontal AXIS 211A: 27°-67° horizontal | Installation, management and maintenance | AXIS Camera Management tool on CD and web-based configuration Configuration of backup and restore Firmware upgrades over HTTP or FTP, firmware available at www.axis.com |
| Minimum illumination | AXIS 210A: 1.0 lux, F1.2 AXIS 211A: 0,75 lux, F1.0 | Video access from Web browser | Camera live view, video recording to file (ASF), sequence tour for up to 20 external Axis video sources, customizable HTML pages |
| Video compression | Motion JPEG MPEG-4 Part 2 (ISO/IEC 14496-2), Profiles: ASP and SP | Minimum Web browsing requirements | Pentium III CPU 500 MHz or higher, or equivalent AMD, 128 MB RAM, AGP graphics card 32 MB RAM, Direct Draw Windows XP, 2000, 2003 Server, DirectX 9.0 or later Internet Explorer 6.x or later For other operating systems and browsers see www.axis.com/techsup |
| Resolutions | 16 resolutions from 640 x 480 to 160 x 120 via API, 5 selections via configuration web page | System integration support | Open API for application integration including AXIS VAPIX API*, AXIS Media Control SDK*, event trigger data in video stream Quality of Service (QoS) Layer 3, DiffServ Model Embedded Linux operating system <i>* Available at www.axis.com</i> |
| Frame rate | Motion JPEG: Up to 30 fps in all resolutions MPEG-4: Up to 25 fps at 640x480 Up to 30 fps at 480x360 or lower | Supported protocols | IPv4/v6, HTTP, HTTPS, SNMPv1/v2c/v3 (MIB-II), SSL/TLS*, TCP, QoS, RTSP, RTP, UDP, IGMP, RTCP, SMTP, FTP, ICMP DHCP, UPnP, Bonjour, ARP, DNS, DynDNS, SOCKS, IEEE802.1X. More information on protocol usage available at www.axis.com <i>*This product includes software developed by the Open SSL Project for use in the Open SSL Tool kit (www.openssl.org)</i> |
| Video streaming | Simultaneous Motion JPEG and MPEG-4 Controllable frame rate and bandwidth Constant and variable bit rate (MPEG-4) | Video management software (not incl.) | AXIS Camera Station - Surveillance application for viewing, recording and archiving up to 25 cameras See www.axis.com/partner/adp_partners.htm for more software applications via partner |
| Image settings | Compression levels: 11 (Motion JPEG)/23 (MPEG-4) Rotation: 90°, 180°, 270° Configurable color level, brightness, contrast, exposure, white balance, fine tuning of behavior at low light Overlay capabilities: time, date, privacy mask, text or image | Included Accessories | Power supply 9 V DC, stand, connector kit, Installation Guide, CD with installation tool, software and User's Manual, MPEG-4 licenses (1 encoder, 1 decoder), MPEG-4 decoder (Windows) |
| Audio | Two-way (full or half duplex) or one-way. Built-in microphone and external microphone input. Mono audio output (line level) connects to PA system or active speaker with built-in amplifier. Audio compression: G.711 PCM 64kbit/s, G.726 ADPCM 32 or 24 kbit/s | Accessories (not incl.) | Housings for adverse indoor/outdoor environments Power over Ethernet midspans AXIS 292 Network Video Decoder MPEG-4 Decoder multi-user license pack |
| Shutter time | 2 sec to 1/12500 sec | Approvals | EN 55022 Class B, EN 61000-3-2, EN 61000-3-3, EN 55024, FCC Part 15 Subpart B Class B, ICES-003 Class B, VCCI Class B, C-tick AS/NZS 3548, EN 60950 Power supply: EN 60950, UL, cUL |
| Security | Multiple user access levels with password protection IP address filtering, HTTPS encryption | Dimensions (HxWxD) and weight | AXIS 210A: 38 x 88 x 157 mm (1.5" x 3.4" x 6.2") AXIS 211A: 38 x 95 x 178 mm (1.5" x 3.7" x 7.0") 270 g (0.6 lb) |
| Users | 20 simultaneous users of which 10 with audio Unlimited users using multicast (MPEG-4) | | |
| Language support (Web interface) | English. Downloadable language files for French, German, Italian, Japanese and Spanish are available at www.axis.com/techsup . Other language files may also be available. | | |
| Alarm and event management | Events triggered by built-in motion detection, audio detection, external inputs or according to a schedule. Image upload over FTP, email and HTTP Notification over TCP, email, HTTP and external outputs Pre- and post alarm buffer: up to 9 MB (up to 5 min of 320x240 video at 4 frames per sec) | | |
| Connectors | RJ-45 for Ethernet 10BaseT/100BaseTX Terminal block for 1 alarm input, 1 output and alternative power connection 3.5 mm jack for Mic or Line mono input 3.5 mm jack for Line mono output | | |

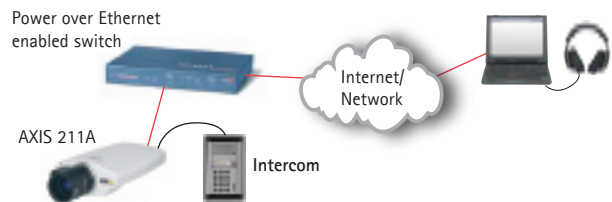


Interlaced, 20 ms difference between odd and even lines



Progressive Scan, all lines are captured at the same time

Progressive scan is used instead of the interlaced method found in analog CCTV (PAL/NTSC) cameras. With progressive scan all pixels (lines) are captured at the same time, enabling moving images to be presented without distortion.



Cabling requirements and installation costs are reduced by the built-in support for Power over Ethernet and audio, enabling power to the cameras and two-way audio to be delivered over the network.

www.axis.com



Channel Partners **Kwick Soft Solutions Pvt Ltd**, Chennai, India.