

AXIS 214 PTZ Network Camera

Day & night camera with pan/tilt/zoom and audio

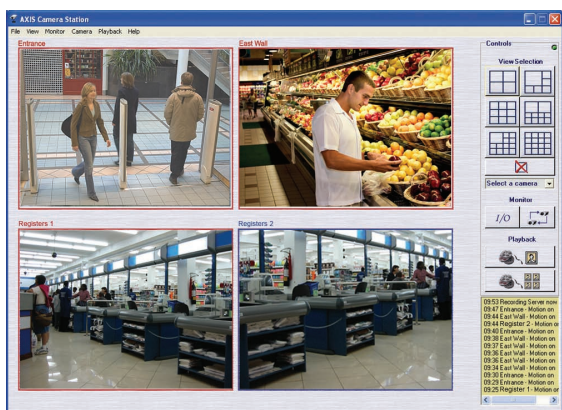
AXIS 214 PTZ Network Camera is a high performance camera for professional surveillance and remote monitoring. It combines a high quality color camera with the flexibility of remote pan/tilt/zoom operations through operator control. Incorporating an 18x optical motorized lens with auto focus, the AXIS 214 PTZ allows the user to zoom in on a small or distant object with exceptional clarity. The movability of the camera enables it to cover a wide field of view.

With automatic day/night functionality and the highly light sensitive CCD, this camera provides perfect color images in low-light conditions as well as sharp black and white pictures in extremely poor lighting conditions. The built-in audio support enables remote users to not only view, but also listen in on an area and communicate orders or requests to visitors or intruders, thereby increasing the monitoring options.

Pre- and post-alarm image buffering, video motion detection, scheduled and triggered event functionality with alarm notification together with two-way audio makes the AXIS 214 PTZ ideal for remotely monitoring people and property. This network camera is designed for use in mid-sized businesses, such as retail stores and supermarkets, transmitting images over the local area network or the Internet.



- Pan and tilt camera with 18x optical zoom and auto focus
- Automatic day and night functionality
- Two-way audio
- Simultaneous MPEG-4 and Motion JPEG
- High-resolution camera with 704x576 pixels PAL, 704x480 NTSC



AXIS[®]
COMMUNICATIONS
Make your network smarter

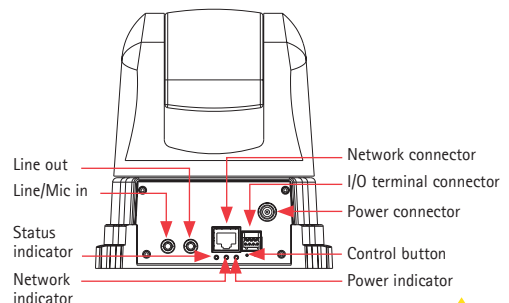
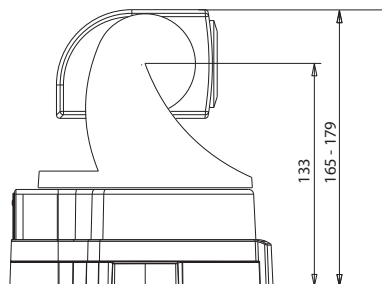
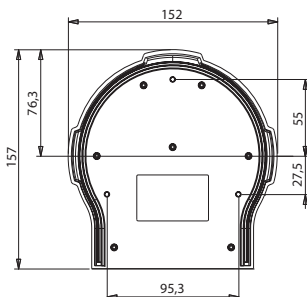
AXIS 214 PTZ Network Camera



Specifications

Models	AXIS 214 PTZ 50 Hz (PAL) AXIS 214 PTZ 60 Hz (NTSC)	Connectors	Ethernet 10BaseT/100BaseTX, RJ-45 Terminal block for 1 alarm input, 1 output and alternative power connection Line/mic in 3,5mm tele jack Line out 3,5mm tele jack
Image sensor	1/4" Sony ExView HAD CCD	Processors and memory	CPU: ETRAX 100LX 32bit Video processing and compression: ARTPEC-2 RAM: 32 MB, Flash: 8 MB Battery backed-up real-time clock
Lens	4.1 - 73.8 mm, F1.4 - 3.0, auto focus, auto day/night Focus range: 10 mm (wide) or 800 mm (tele) to infinity	Power	11 - 13 V DC, max 14 W
Angle of view	2.7° - 48° horizontal	Operating conditions	0 - 45 °C (32 - 113 °F) Humidity 20 - 80% RH (non-condensing)
Zoom	18x optical, 12x digital	Installation, management and maintenance	AXIS Camera Management tool on CD and web-based configuration Configuration of backup and restore Firmware upgrades over HTTP or FTP, firmware available at www.axis.com
Minimum illumination	Color mode: 0.3 lux at F1.4, 30IRE Black/white mode: 0.005 lux at F1.4, 30IRE	Video access from web browser	Camera live view, video recording to file (ASF), sequence tour for up to 20 PTZ presets or Axis video sources, customizable HTML pages
Pan range	± 170°	Minimum web browsing requirements	Pentium III CPU 500 MHz or higher, or equivalent AMD 128 MB RAM AGP graphic card, 32 MB RAM, Direct Draw, Windows XP, 2000, DirectX 9.0 or later, Internet Explorer 6.x or later For other operating systems and browsers see www.axis.com/techsup
Tilt range	-30° to 90°	System integration support	Open API for software integration available at www.axis.com , including AXIS VAPIX API, AXIS Media Control SDK, event trigger data in video stream Quality of Service (QoS) Layer 3, DiffServ Model Embedded Linux operating system
Max speed	Pan: 100°/sec Tilt: 90°/sec	Supported protocols	IPv4/v6, HTTP, HTTPS, SSL/TLS*, TCP, QoS, SNMPv1/v2c/v3 (MIB-II), RTSP, RTP, UDP, IGMP, RTCP, SMTP, FTP, ICMP, DHCP, UPnP, Bonjour, ARP, DNS, DynDNS, SOCKS, IEEE802.1X. More information on protocol usage available at www.axis.com * This product includes software developed by the Open SSL Project for use in the Open SSL Tool kit (www.openssl.org)
Video compression	Motion JPEG MPEG-4 Part 2 (ISO/IEC 14496-2), Profiles: ASP and SP	Included accessories	Installation Guide, CD with User's Manual, demo software, installation and management tools, ceiling mount kit, power supply 12 V DC 3A MPEG-4 licenses (1 encoder, 1 decoder), MPEG-4 decoder (Windows)
Resolutions	4CIF, 2CIFExp, 2CIF, CIF, QCIF Max. 704x480 (NTSC) 704x576 (PAL) Min. 160x120 (NTSC) 176x144 (PAL)	Video management software (not incl.)	AXIS Camera Station - Surveillance application for viewing, recording and archiving up to 25 cameras. See www.axis.com/partner/adp_partners.htm for more software applications via partners
Frame rate (NTSC/PAL)	Motion JPEG: Up to 30/25 fps at 4CIF in all resolutions MPEG-4: Up to 25/21 fps at 4CIF/2CIFExp Up to 30/25 fps at 2CIF/CIF/QCIF	Accessories (not incl.)	Housings for adverse indoor/outdoor environments, AXIS 295 Video Surveillance Joystick AXIS 292 Network Video Decoder MPEG-4 decoder multi-user license pack
Video streaming	Simultaneous Motion JPEG and MPEG-4 Controllable frame rate and bandwidth Constant and variable bit rate (MPEG-4)	Approvals	EN55022 Class A, EN 55024, EN61000-3-2, EN61000-3-3, EN61000-6-1, EN61000-6-2 FCC Part 15 Subpart B Class A, VCCI Class A, C-tick AS/NZS CISPR 22, ICES-003 Class A, EN60950 Power Supply: UL, CSA, EN60950
Image settings	Compression levels: 11 (Motion JPEG) /23 (MPEG-4) Rotation: 90°, 180°, 270° Backlight compensation, white balance, color, black/white, brightness, sharpness and exposure control Overlay capabilities: time, date, text or image Aspect ratio correction De-interlace filter (4 CIF resolution)	Dimensions (HxWxD) and weight	179 x 152 x 133 mm (7.0" x 6.0" x 5.3") 1110 g (2,45 lbs)
Pan/Tilt/Zoom	20 preset positions, guard tour, sequence mode, control queue Supports Windows compatible joysticks Designed for operator control*		
Shutter time	1 to 1/10000 sec		
Audio	Two-way (full or half duplex) or one-way External microphone or line in input. Mono audio output (line level) connects to PA system or active speaker with built-in amplifier Audio compression: G.711 PCM 64kbit/s, G.726 ADPCM 32 or 24 kbit/s		
Security	Multiple user access levels with password protection IP address filtering, HTTPS encryption Network control IEEE 802.1X		
Users	20 simultaneous users Unlimited number of users using multicast (MPEG-4)		
Alarm and event management	Events triggered by built-in multi-window motion detection, external inputs, PTZ preset position, audio detection or according to a schedule Image upload over FTP, email and HTTP Notification over TCP, email, HTTP and external outputs Pre- and post alarm buffer of 9 MB (approx 4 min of CIF resolution video at 4 frames per sec)		

* Not designed for continuous PTZ movements e.g. Guard tour. For continuous movement, please see Axis network dome offering



www.axis.com



Channel Partners **Kwick Soft Solutions Pvt Ltd**, Chennai, India.